



ಮಿಂಚು Minchu

ABOUT US:- Minchu ,we believe in possibilities unlimited, we are an innovative company aimed at manufacturing next generation safety products in electrical, electronics and industrial engineering to provide electrical safety ,safe, innovative and better new era products which makes life safe, simpler, better. We are into R&D and to be pioneers and leaders in electrical /electronics technology.

- POSSIBILITIES UNLIMITED -SOLUTIONS FOR ELECTRICAL SAFETY &ENERGY SAVING
- SOME GREAT INFLUENCERS -NIKOLAS TESLA- IF YOU WANT TO FIND THE SECRETS OF UNIVERSE THINK IN TERMS FREQUENCY ,ENERGY AND VIBRATION
- THOMAS ALVA EDISON -THE VALUE OF AN IDEA ,LIES IN USING OF IT
- SIR MV- TO GIVE REAL SERVICES YOU MUST ADD SOMETHING UNIQUE WHICH CANNOT BE BOUGHT OR MEASURED BY MONEY

ವಿದ್ಯುತ್ ಅಪಾಯ
ತಡೆಯುವ ಹೆಲ್ಮೆಟ್
2015ನೇ ಬ್ಯಾಚ್‌ನ ವಿದ್ಯಾರ್ಥಿ ಪ್ರಣವ್ ಅನ್ನೇ
ಷಿಸಿದ್ದ 'ಸ್ಮಾರ್ಟ್ ಹೆಲ್ಮೆಟ್' ಬೆಸ್ತಾಂನಲ್ಲಿ ಬಳಕೆ
ಯಾಗುತ್ತಿದೆ. 'ಕಂಬದಲ್ಲಿ ವಿದ್ಯುತ್ ಪ್ರವಹಿಸು
ತ್ತಿದೆ ಎಂದರೆ ಈ ಹೆಲ್ಮೆಟ್ ಸದ್ದು ಮಾಡಲು
ಪ್ರಾರಂಭಿಸುತ್ತದೆ. ಪ್ರಾಯೋಗಿಕವಾಗಿ 15
ಹೆಲ್ಮೆಟ್‌ಗಳನ್ನು ನೀಡಲಾಗಿದ್ದು, ಉತ್ತಮ ಪ್ರತಿ
ಕ್ರಿಯೆ ವ್ಯಕ್ತವಾಗಿದೆ' ಎಂದು ಪ್ರಣವ್ ತಿಳಿಸಿದರು.

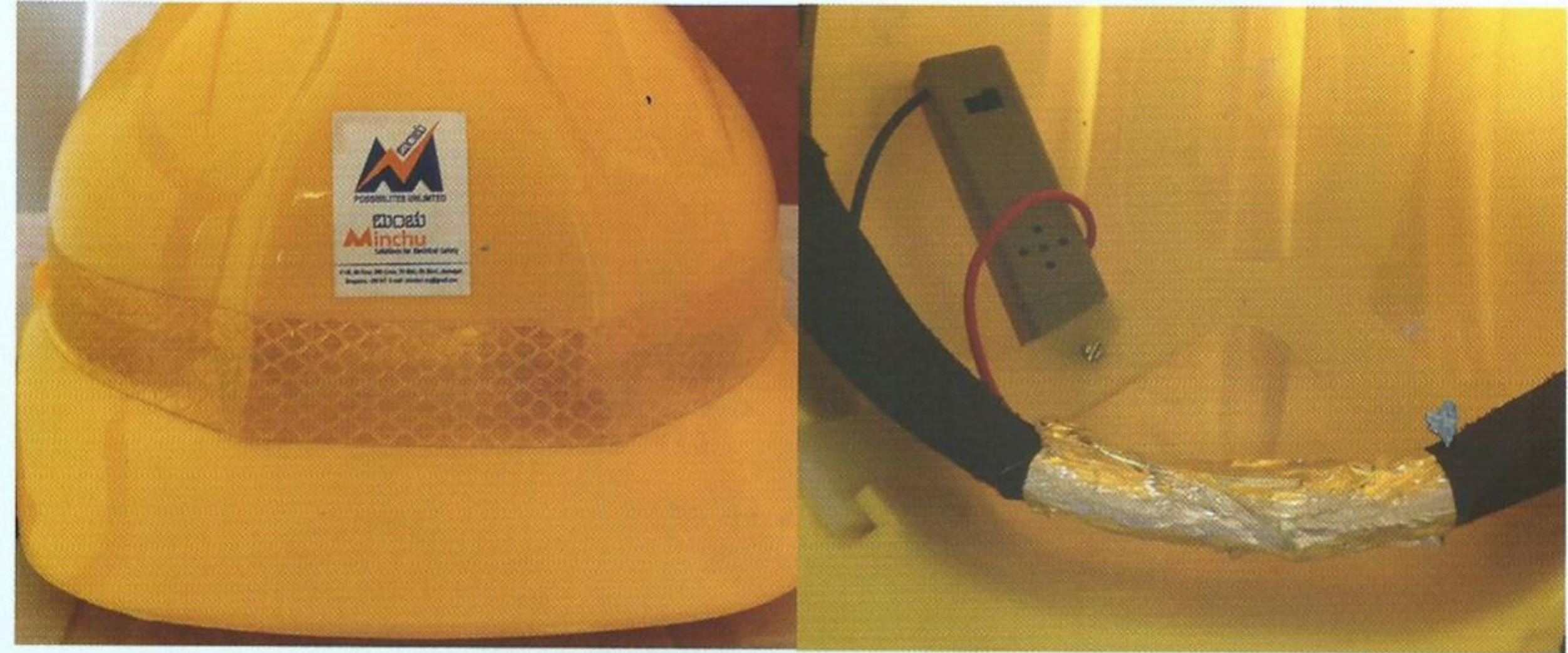


In the year 2015-2016, all over india and all escoms, there were as many as 120 traumatizing electrical accidents in which 65 have led to fatal death. Most of these accidents occurred due to confusion of lineman as to whether power or supply was flowing in the conductor system or not ,due to over confidence, negligence and misunderstanding between lineman and supervisory staff.

Our product the helmet mounted high voltage induction sensor can detect current flow in conductor or in any a.c. Network and signals the user through a buzzer sound. so, as to take precautionary measures to switch off the network and then begin work. The safety helmet also provides mechanical safety to the user head safeguarding any impact to head. The safety helmet used by us is also electrically insulated. This product helps in avoiding accidents and saves lives in electrical field.



PRODUCT PROFILE:- Helmet mounted –high voltage induction sensor a boon to the protection of electrical staff in transmission , distribution companies and industries our product is an innovative product in the electrical safety sector, saving lives and avoiding electrical related accidents.



- *The product can sense electromagnetic field and detect current, it notifies by buzzer sound on detection.
- *It can sense live voltages from 220v-11kv, range without contact and from a safe distance of 1 feet for 220v and 5-6 feet for 11kv.
- *The product can be easily mounted on any safety helmet .
- *The product is available in two variants :
 - 1) mounted in HDPE helmet
 - 2) mounted in FRP helmet
- *The product can be mounted inside or outside along border as per requirements
- *The product uses LR44 button cell battery which can be replaced
- *The product has been successfully tested and certified at CPRI. Our products are used in bangalore electricity supply company limited.
- *The product has reflective tape applied outside providing easy visibility during night or low light conditions.

ELECTRICAL FAULTS & ACCIDENTS AND CAUSES

Improper use of electricity can cause:



Electric Shock

Fire



Explosion

Injury



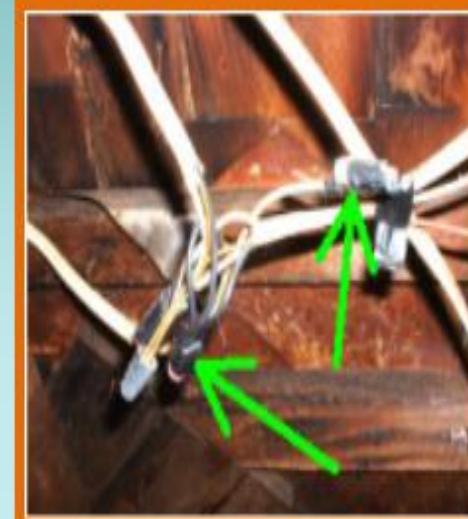
Death



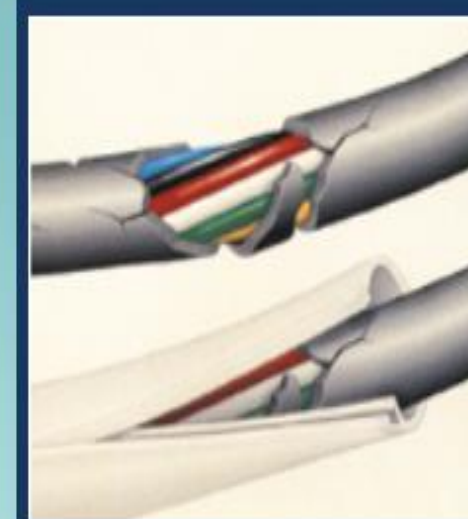
Improper Grounding



Exposed Electrical Parts



Inadequate Wiring



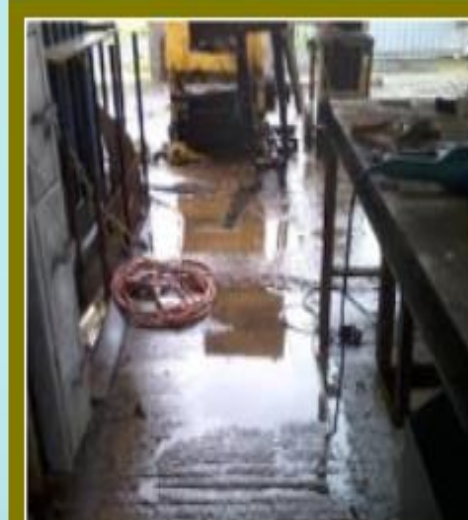
Damaged Insulation



Overloaded Circuits



Damaged Tools & Equipment



Wet Conditions

- 1) An electrician is no less a soldier on field
- 2) 3rd most construction related accidents are electrical accidents
- 3) there are many cases of in-house common public electric accidents due to un awareness and lack on knowledge about electrical protection and safety
- 4) with some apt knowledge ,proper timing of first aid and use of apt PPE, safety Tools and equipment ,we can save lives and avoid electrical accidents

ENERGY SAVING

- **1) Use High energy efficient electrical equipment , tools and appliances**
- **2) Use high power factor equipment-of 0.9 or unity P.F.**
- **3) Use higher efficient wires and cables with better insulation and of right gauge and thickness as per current rating .**
- **Use insulated electrical connecting materials.**
- **4) Use higher star rating energy saving appliances –use LED , BLDC motors**
- **5) Always maintain proper electric circuits and maintain uniform wiring and distribution box with proper earthing protection .**
- **6) Go green save energy , reuse and go renewable , go solar**
- **7) Reduce use of over heat dissipating appliances and use appliances and equipment with high level of heat sink capability**



Lineman/Electrician safety gear equipment

WORK SAFETY MUST ALWAYS BE FIRST PRIORITY

THINK SAFE. WORK SAFE.

Connect to MINCHU FOR ISI ,CPRI CERTIFIED ,OSHO
STANDARD SAFETY EQUIPMENT AND TOOLS

HEARING PROTECTION & FACE MASK

ELECTRICIAN TOOLS AND SAFETY EQUIPMENT GEAR PICTORIAL DEPICTION

HAND GLOVES

ALUMINIUM BODY

**Emerging Leaders In Electrical Safety
And Electrical Solution**

POSSIBILITIES UNLIMITED

Minchu
Solutions for Electrical Safety

- 1) Safety Helmet
- 2) Shock proof gloves
- 3) RECHARGABLE LED torch
- 4) Reflective rain wear
- 5) Hard gum boots
- 6) Safety eye wear
- 7) Telescopic earth discharge rod
- 8) Voltage tester
- 9) Safety belt
- 10) GOS rod
- 11) PP rope
- 12) Cutting pliers
- 13) Screw driver set

- Personal Protective Equipment (PPE) provides protection to workers from hazards.
- Depending on the job task to be performed, PPE for electrical workers generally include:
 - Safety helmet
 - Safety shoes
 - Goggles
 - Face shield
 - Rubber gloves
- Additional PPE, such as fall protection equipment, respirators, may be needed, depending on the potential hazard in the job.

Safety helmet

Safety shoes

Goggles

Face shield

Rubber gloves

CPRI/ERDA CERTIFIED SAFETY EQUIPMENTS AS PER OSHA STANDARDS

UI1211 Nape	Ultra Pro 3000	Proton 4000	Ultra 5000	Fusion 6000
Ultra Vent 7000	Vista 8000	UI 1411 Loader	Thermo Guard 9000	Bump Cap
FC 58 With Carrier	FC 60	A3 Face Shield Carrier	A4 Alluminium Carrier	FC 48 Welding
6PAU Welding	6PAV Welding	6PA3 Welding	B10 R Ratchet Type	Clear Stretchable Long

HAND GLOVES

Unsuported Nova	Capitol II	Barrier 100	Silver 50
Unsuported Nova	Interface Plus	Interface Tough	Frontier
Conqueror II	Stickgrip	Hammer It	Powder Free Latex
Mexiflex Ultimate	Mexiflex Elite	Mexiflex Cut	Maxicut
Maxicut Oil	Maxidry	Maxichem	Maxifoam

FEET PROTECTION

Hillson Chota Hati	Hillson Hitter	Hillson Discovery	Hillson Lf-02 Ladies Shoes
Hillson Z + 1	Hillson Panther	Hillson Soccer	Hillson Jaguar
Hillson Nucleus	Hillson Mirage	Hillson Jackport	Hillson Rockland

BODY HARNESS AND LANYARDS

EDGE 01	ECO 04	Tango 2	Ultra Tec
UB 102 Plus	WP 01	WP 02	Denim Jacket Harness
RL 02	RL 05	BL 04	BL 03
EL 09	Absorb WL 01	Absorb 01	Easy Absorb RL 22
Easy 308	Easy SH 18	Easy SH 60	Easy SH 90
Multi Use Connector			

abm:mvm6@gmail.com

STANLEY

HAND TOOLS & STORAGE

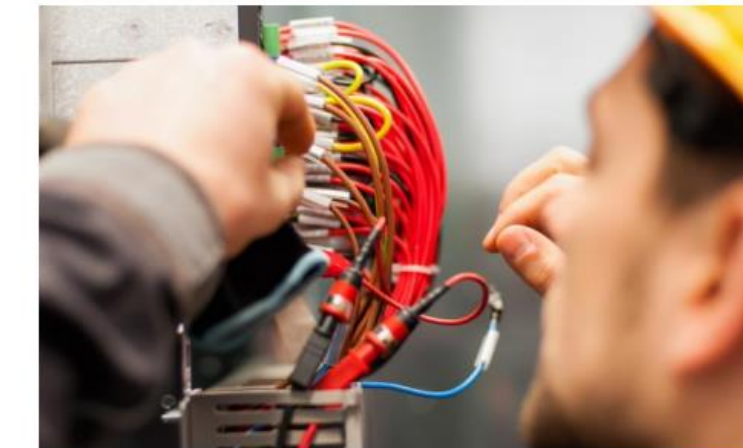
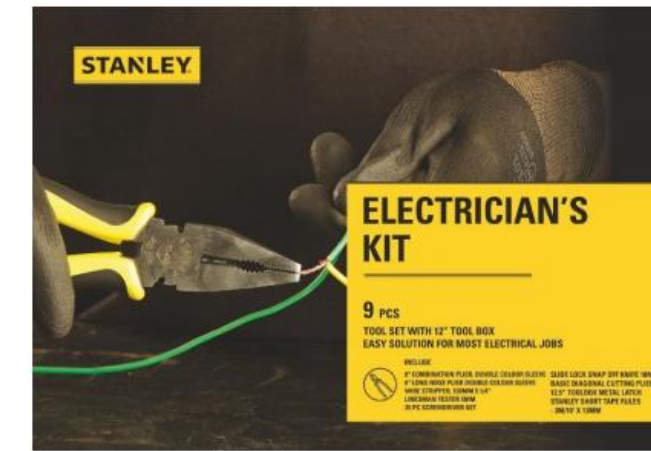


POWER TOOLS AND HAND TOOLS – STANLEY, BLACK AND DECKER

ELECTRICIAN-KIT

ELECTRICIAN KIT

- 9Pc tool set
- With 12" tool box
- Easy solution for most electrical jobs

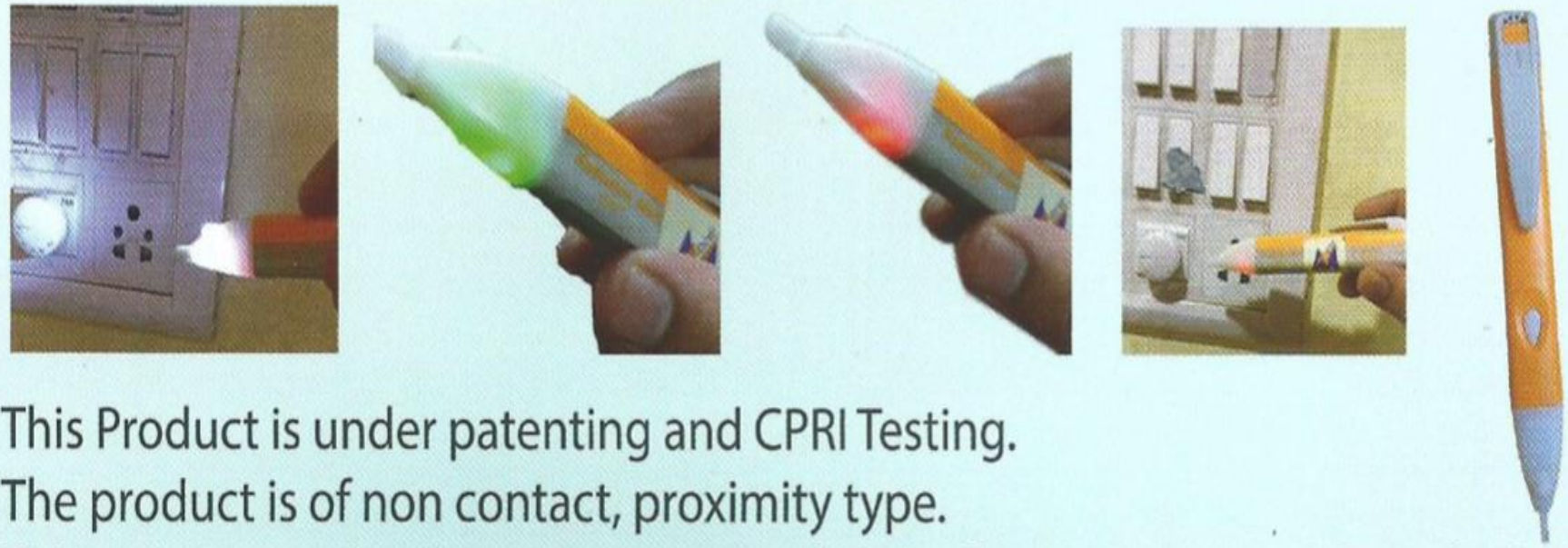


Contents of the Kit

SKU	Description
70-482	8" COMBINATION PLIER, DOUBLE COLOUR SLEEVE
70-483	6" LONG NOSE PLIER DOUBLE COLOUR SLEEVE
84-214-22	WIRE STRIPPER, 130MM 5 1/4"
66-120	LINESMAN TESTER 5MM
STHT0-70885	35 PC Screwdriver set
STHT10323-800	Slide Lock Snap Off Knife 18mm
STHT84124-8	BASIC DIAGONAL CUTTING PLIERS 4"
STST1-75515	12.5" TOOLBOX METAL LATCH
STHT36125-812	Stanley Short Tape Rules 3m/10' x 13mm



Pen type NON CONTACT Voltage Alert Tester - our Up coming latest product



This Product is under patenting and CPRI Testing.

The product is of non contact, proximity type.

This unique product has a sensing capability of range 220v-11,000v, which is L.V.&H.V. and is first of its kind in the world.

This Product can sense 220v at an approx distance of 1-1.5 ft and 11kv at 5-6 ft .

This Product has an inbuilt LED torch which can be used in low light conditions .

This Product has easy battery replacement facility and requires AAA battery which can also be rechargeable.

This Product has auto OFF feature after 5minutes of ON stage, so battery life is saved.

This Product has the facility of product working test .

This Product cabinet and outer body is IP67 certified.

Pen type non contact voltage tester



- With intelligent auto off timer and **AUDIO-VISUAL** alert for voltage sensing -CPRI tested

· Different LED Blinking for Searching and Testing
· 70 Db Loud Buzzer Sound
· Auto Off feature
· Inbuilt Torch
· Hard ABS body



SURESH
345/21, 38th Cross, 2
Bangalore - 560 069.
24 hours HELPLINE No. - 9841

ಜುಲೈ 2019

ಭಾನವ	1	2	3	4	5	6	7
SUN							7
MON	1						8
TUE	2						9
WED	3						10
THUR	4						11

SAFETY SWITCHING BOX

MADE IN INDIA, BY INDIANS FOR INDIANS....

A BOON TO AVOID ELECTRICAL ACCIDENTS AT CONSTRUCTION SITES

PROBLEMS FACED AT WORK

At construction sites, electrical accidents occur due to two wires being interconnected, mismanagement of wires, plugs, and socket. In case of electrical accidents, the power supply is not cut until someone visits the mains

PRPDUCT IMAGES



Here we can see LOAD 1 and LOAD 2 connected- Green LED glows to depict all OK condition



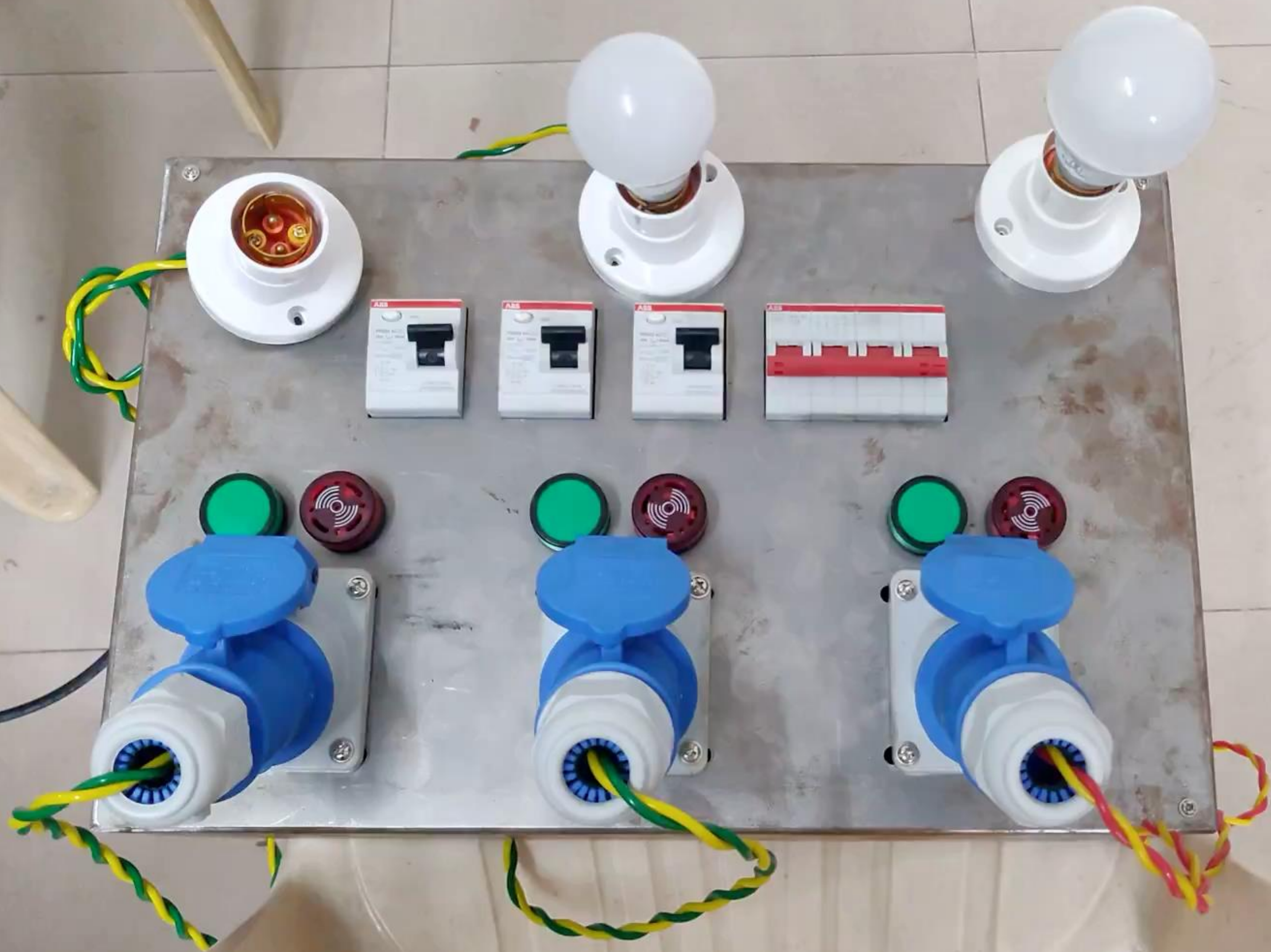
There is one common isolater switch to control all three MCB switches, which will cut off to all three MCBs.



We can observe that LOAD 2 has tripped due to fault, hence output through buzzer and red light indicates the same.

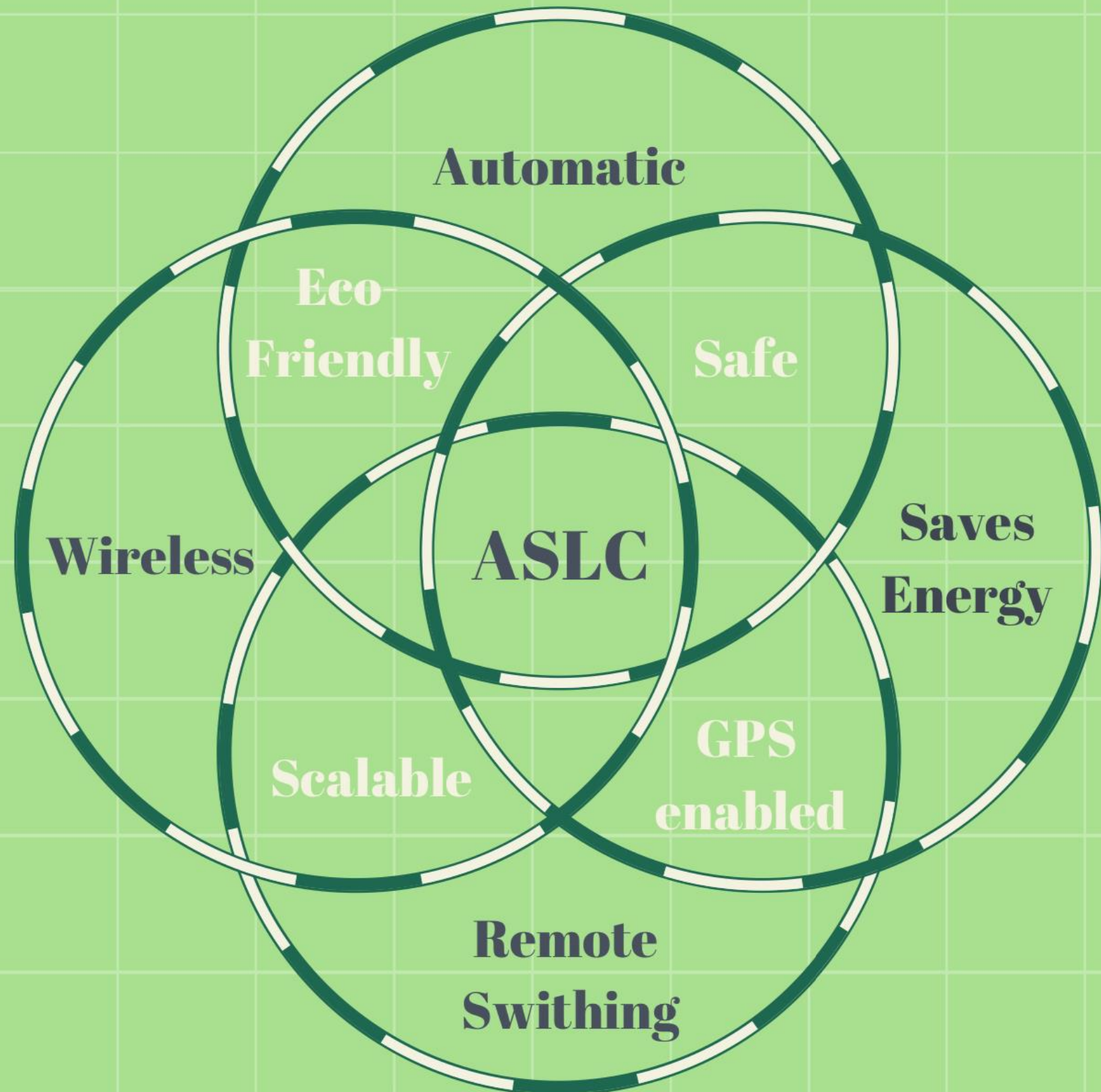
HOW DOES IT WORK?

With the help of our Safety Switching Box, electrical accidents and problems can be avoided. The power socket trips on detection of earth leakage or current leakage from a wire connected to the socket. On detection of current leakage, we get notified by a LED and buzzer. Thus this output can be sent at the very second of leakage.



Automatic Street Light Control (ASLC)

Made in India, by Indians for Indians



Multiple Lights Switching

With various range of ASLC (Automatic Street Light Control) product user can control 40 to 150 LED lights or SODIUM Vapor Lamps (Less quantity) simultaneously.

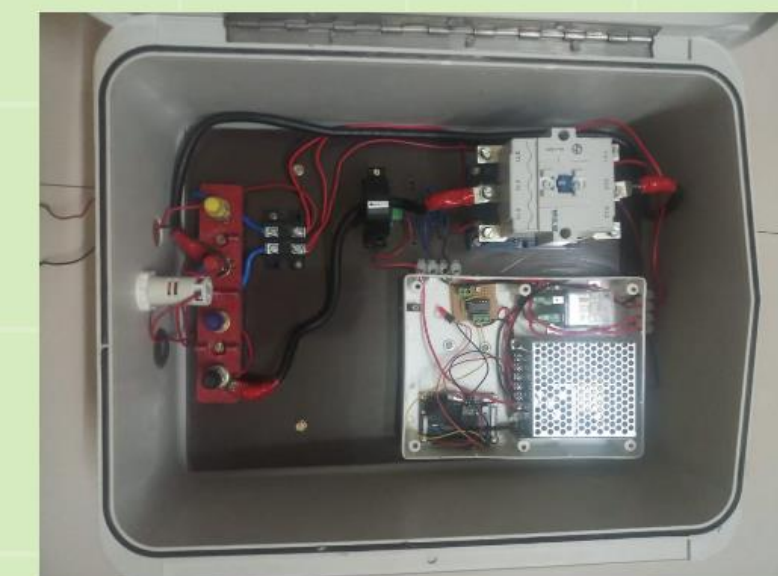
ASLC 100 – 100 LED UNITS

ASLC 60 -- 60 LED UNITS

ASLC 40 -- 40 LED UNITS

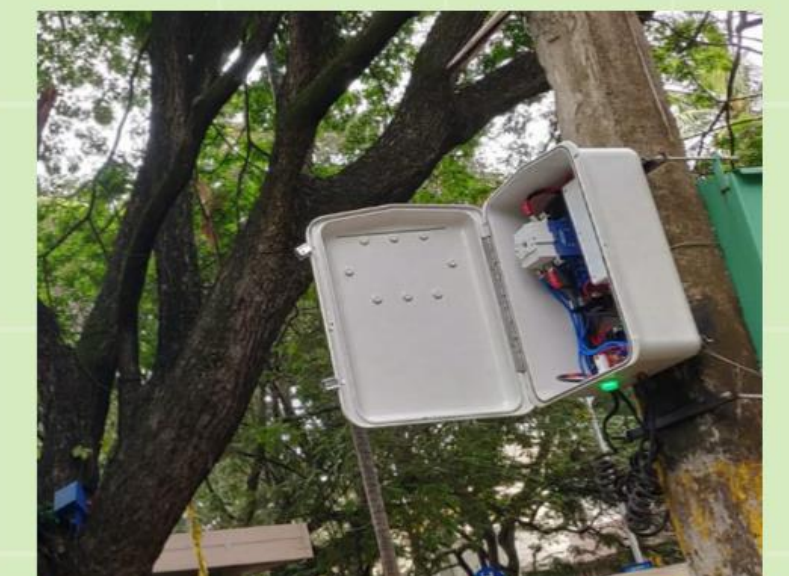
As Per Customer Requirements the Units can be increased on ASLC.

Product Image



ASLC interiors:

Notifies if any street light is not working which is connected to a switching box.
Non-Contact controlling avoids electrical accidents.



Mounted Product:

Timely switching on/off reduces power loss, hence saving money
Reduces unwanted carbon emissions
Secured app controlled monitoring



STORMMASTER ESE Air Terminal



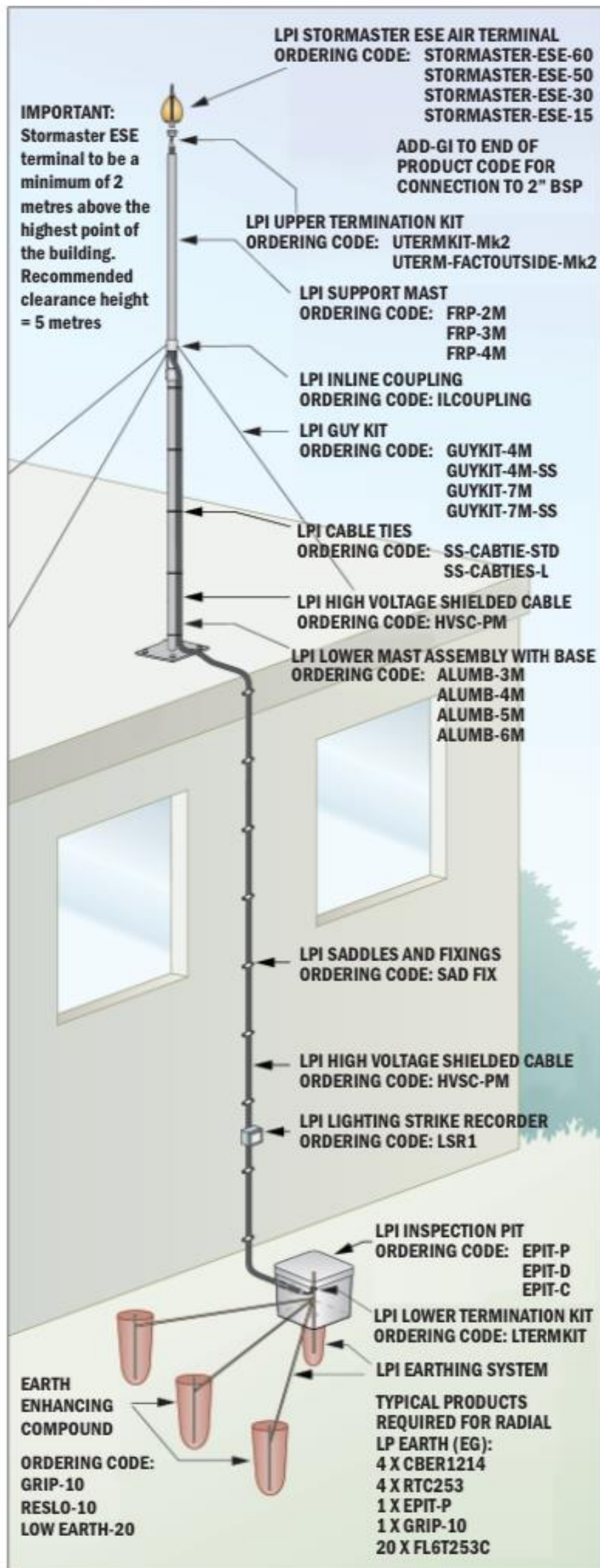
TESTED
NF C 17-102 (2011)
STANDARD



LPS Installer

APS

Stormmaster Installation



Disclaimer

- LPI maintains a policy of on-going product development, specifications are subject to change without notice.
- Application detail, illustrations and schematic drawings are representative only and should be used as guides.
- It should be noted that 100% protection for direct strike lightning, lightning detection and surge and transient

LPI

LPI STORMMASTER ESE AIR TERMINAL

LPI's Stormmaster ESE

The LPI Stormmaster (Early Streamer Emission) range of terminals provides a safe and efficient system for the protection of your facility from direct lightning strikes. The LPI Stormmaster ESE terminal captures the lightning energy at a preferred point.

How does the LPI Stormmaster ESE Terminal work?

The Stormmaster ESE air terminal uses the naturally occurring electrical field to complete the timely release of an upward streamer. This process provides for a safe and efficient method of controlling dangerous lightning energy at a preferred point.

As a thunderstorm gathers overhead, the ambient electrical field surrounding the Stormmaster ESE begins to rise in voltage. Upon the approach of a downward leader towards the protected area, there is a rapid increase in the electric field which initiates the triggering of an upward streamer from the Stormmaster ESE terminal. The early initiation allows for a larger or enhanced area of protection to be provided by the Stormmaster ESE in comparison to a conventional rod, in accordance with NF C 17-102 (2011).



With the release of the upward streamer from the final tip earlier than other competing structural points, the Stormmaster ESE terminal becomes a preferred point for the capture of the lightning discharge within the protected area.

The Stormmaster ESE range

LPI Early Streamer Emission (ESE) air terminals in both **Anodised Aluminium** and **Stainless Steel**.

Ordering Code:

STORMMASTER ESE-XX-YY-ZZ

XX: Available in 15, 30, 50 and 60

YY: Blank for Gold (anodised aluminium) model, **SS** for stainless steel model

ZZ: Blank for standard model (to FRP Mast), **GI** for 2 inch BSP GI pipe adaptor

Stormmaster ESE Tester:

Ordering Code: Stormmaster-ESE-Tester



Certified Performance

As one of the leading companies in the field of lightning protection, LPI has invested heavily in field and laboratory testing as part of its ongoing commitment to research and development.

Throughout the product development of the Stormmaster ESE, the proto-type models were subjected to intense testing under high voltage conditions. Following further refinements, the Stormmaster terminals were subjected to final testing by an independently accredited test laboratory which completed testing in full compliance with the French National Standard NF C 17-102 (2011). The final testing of Stormmaster ESE terminals showed effective performance as defined in this Standard.



All Stormmaster terminals tested by the ITE HV laboratory in Europe, which has national (ENAC) and international (ILAC / ISO IEC) accreditation.

JK CHEMRODE

The core of "JK" brand earthing electrode is termed as "CHEMRODE" which consists of the various constructions & designs listed below.

JK CHEMRODE "CPRI tested" consists of primary earthing electrode (outer pipe) and secondary earthing electrode (inner pipe). The secondary electrode is inserted inside the primary electrode and the process of hot dip galvanization. The space between the primary and the secondary electrode is duly filled with a highly conductive and non-corrosive compound which safeguards the electrode getting corrode over a long period of time under the soil.

Also the compound ensures the easy distribution of leakage/fault current lands on the electrode. Both the ends of the electrode are permanently sealed at both the ends with the lead terminal at the top with 2 holes on the terminal for connecting to the load/equipment.

JK CHEMRODE consists of primary earthing electrode (outer pipe) and a strip inside. The strip is inserted inside the primary electrode to the full length from top to bottom and the process of hot dip galvanization is well performed. The space between the outer pipe and the strip is duly filled with a highly conductive and non-corrosive compound which safeguards the electrode getting corrode over a long period of time under the soil.



Dual Pipe Technology (G.I.)

Technical Specification

Code	Length (mm)	Outer Dia (mm)	Inner Dia (mm)	Terminal (mm)	G.I. Pipe
JK 250	2000	46-50	23-25	32x10	✓
JK 350	3000	46-50	23-25	32x10	✓
JK 280	2000	76-80	47-50	50x10	✓
JK 380	3000	76-80	47-50	50x10	✓

Strip in Pipe Technology (G.I.)

Technical Specification

Code	Length (mm)	Outer Dia (mm)	Strip Size (mm)	Terminal (mm)	G.I. Pipe
JK 250F	2000	46-50	32x10	32x10	✓
JK 350F	3000	46-50	32x10	32x10	✓
JK 280F	2000	76-80	50x10	50x10	✓
JK 380F	3000	76-80	50x10	50x10	✓

Single Pipe Technology (G.I.)

Technical Specification

Code	Length (mm)	Outer Dia (mm)	Terminal (mm)	G.I. Pipe
JK 250S	2000	46-50	32x10	✓
JK 350S	3000	46-50	32x10	✓
JK 280S	2000	76-80	50x10	✓
JK 380S	3000	76-80	50x10	✓

Copper Bonded Rod

JK CHEMRODE are of UL listed, CPRI tested copper bonded earth rods are of a high quality which comply by the most demanding regulations, for efficient and long lasting earthings. Copper bonded rods are made by molecularly bonding pure electrolytic copper (99.9%) onto a low carbon, high tensile steel core with exceeding 0.254 mm (254 microns) thick. Low carbon & high tensile steel core is selected to ensure a perfect and even bonding between the steel and copper. The thickness of the copper layer is of minimum 254 microns to meet the UL 467 standard. The low carbon tensile steel comply with UL 467, BS 970 & AISI 1018 that has great capacity of being stretched or extended at least up to 600 N/mm². The steel rods are extremely opposed to oxidization and add a lot of strength & longevity to electrical grounding system.



Technical Specification

Code	Length (feet)	Diameter (inch)	Copper Bonding Thickness
JK 1208CBR	8	1/2	254 microns
JK 1210CBR	10	1/2	254 microns
JK 1212CBR	12	1/2	254 microns
JK 5808CBR	8	5/8	254 microns
JK 314CBR	10	5/8	254 microns
JK 5812CBR	12	5/8	254 microns
JK 3408CBR	8	3/4	254 microns
JK 317CBR	10	3/4	254 microns
JK 3412CBR	12	3/4	254 microns
JK 0108CBR	8	1	254 microns
JK 0110CBR	10	1	254 microns
JK 514CBR	5	5/8	254 microns
JK 517CBR	5	3/4	254 microns

Copper Rod

JK CHEMRODE are of copper rod of a high quality which comply by the most demanding regulations, for efficient and long lasting earthings. Copper rods are made by pure electrolytic copper (99.9%). The copper rods are ideally suitable where soil conditions are very corrosive, such as soil with high salt and moisture content. These rods add a lot of strength & longevity to electrical grounding system.



Technical Specification

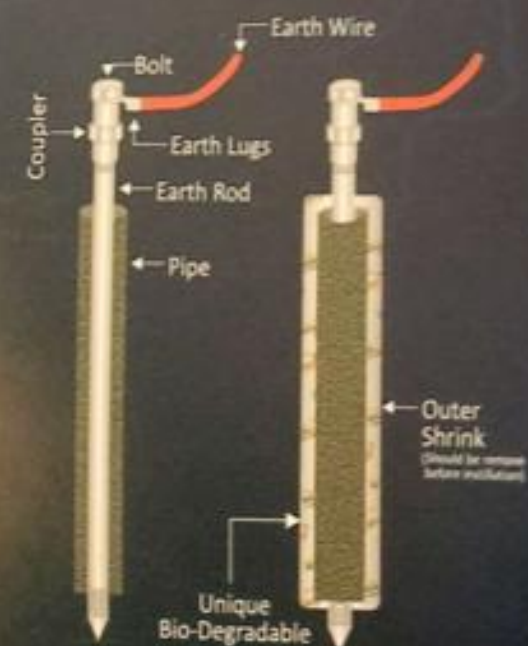
Code	Length (feet)	Diameter (inch)
JK 1208CR	8	1/2
JK 1210CR	10	1/2
JK 1212CR	12	1/2
JK 5808CR	8	5/8
JK 314CR	10	5/8
JK 5812CR	12	5/8
JK 3408CR	8	3/4
JK 317CR	10	3/4
JK 3412CR	12	3/4
JK 0108CR	8	1
JK 0110CR	10	1
JK 514CR	5	5/8
JK 517CR	5	3/4

Shockpro™

Your Life Saver

ShockPro - your life saver

- Revolutionary Product, your comfort relax from electrical shock and damages.
- All-in-one, ready to install, easy to transport, easy to connect.
- Dual benefits, anti-corrosive and excellent current carrying capacity.
- Special treated galvanised material means very longer life.



Visibility of Connection

- Actual visibility of connection due to terminal remain above the surface
- Brass made High quality terminal - Connectivity on your eye-sight
- A coupler provide limitless extensions on variable requirements



Patent - All rights reserved

- Research based designed, an Integration of Rode-Pipe-Mineral, unbeatable solutions.
- A unique Integration (design) of Rode-Pipe-Minerals for Long life solutions.

Consistence Performance

- A bio-degradable tube retains moisture around the ride and pipe
- No compromise to get earth resistance, be relax



READY

Ready to install like plug n play, no need to use additional minerals or back fill compound.

HEALTHY

Healthy current carrying capacity. Tested at CPRI, Bangalore.

RESEARCH

Research based design like well-trained, bodyguard to provide safe earth path for system or system protector.

INNOVATION



Changing technology and new innovations in electrical engineering are crucial for the growth of the industry and Updating the technology is an essential part of the power sector's. Keeping this in mind SHOCKPRO has been developed as an innovation in earthing system.

UNIQUE

Unique bio-degradable tube Making easy and proper installation, maintain earth resistance



ADD MORE, GET MORE

SHOCKPRO gives you freedom to install numbers of SHOCKPRO in one earth pit (extendable) to match your requirements. Thanks to jointer facility between two SHOCKPRO, now no matter your load is domestic or industrial. Just add more get more.



Today, World seems to be smaller place. Almost everybody is using smart gadgets or technologies in residence, Industries, data centres, solar parks, windmills etc. for comfort and efficient productivity, It is true and earthing is the measurements for keeping them safe from electricity fluctuations.



EXTENDABLE

Extendable in length by adding tubes, ShockPro can be extend up to 10 numbers for variable applications.

CHANNEL PARTNERS-PANASONIC-ANCHOR WIRES AND CONDUITS,PIPES,CASES



WIRES

COMPLETE WIRING SOLUTIONS



Advance-FR | Advance-EFFR | FireGuard FR - LSH | LAN Cable | Multi Core | Telephone Cable | Twin Cable

Anchor wire, no fire!



*Consumer Superbrand 2014-15 awarded for Electrical Wiring Devices

ISO 9001:2015
CERTIFIED COMPANY

Cu International Copper Association India
Copper Alliance



1/2

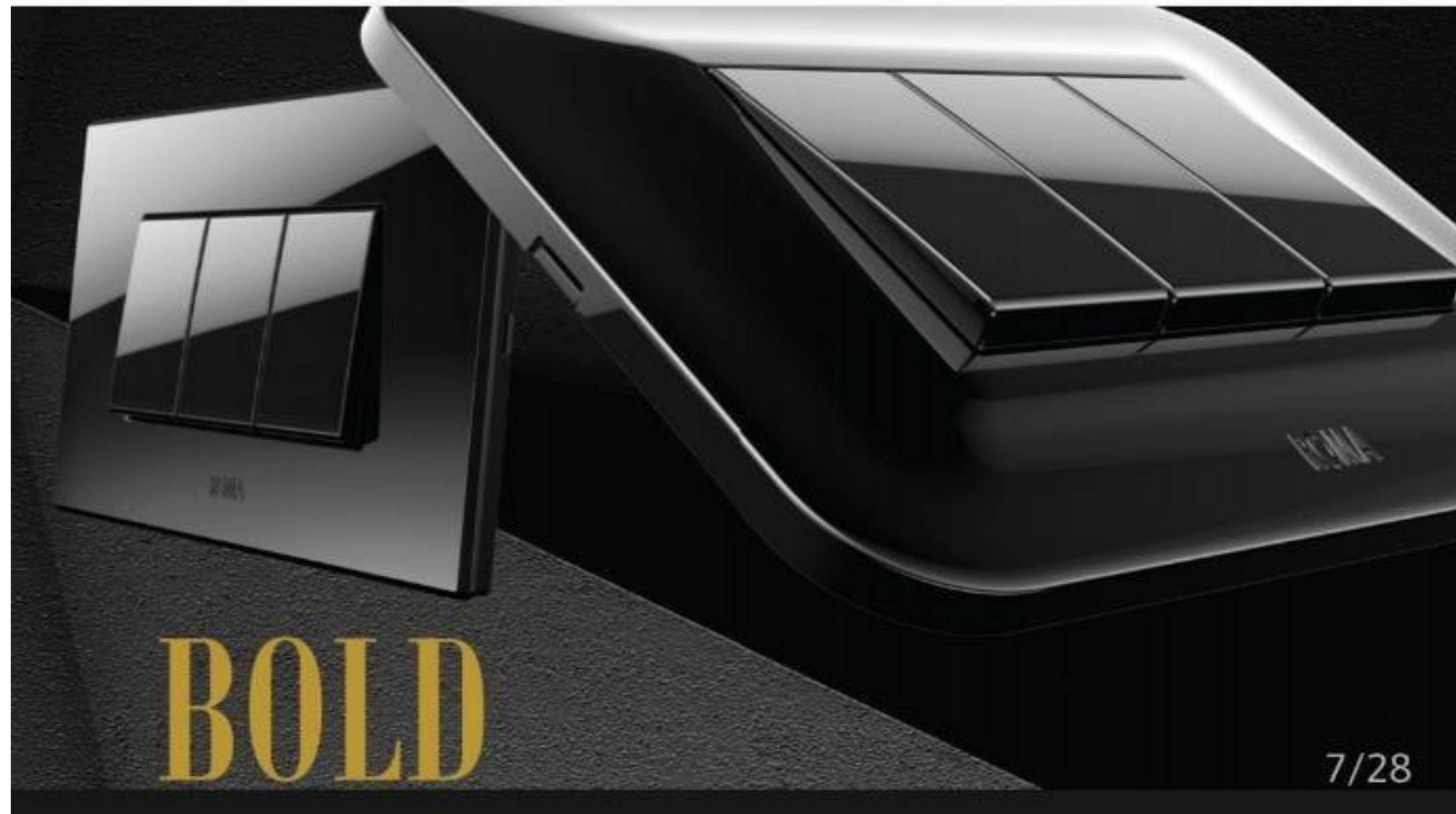


Menu  

CONDUITS & ACCESSORIES



CHANNEL PARTNERS FOR ANCHOR BY PANASONIC SWITCHES ,PLUG SOCKETS, REGULATORS & MCB /SMART SAFETY PLUG



SMART PLUG

A NEW APPROACH TOWARDS APPLIANCE PROTECTION

6 Amp

- Tested by German Laboratory
- Ideal for - T.V., Music System, DTH Set-top box, Laptop, etc.
- Over/Under Voltage Cut Out (165V-270V AC)
- Tolerant to 440V AC input & Surge protection upto 4KV
- Advanced micro-processor technology
- Auto Restart

SMART PLUG APPLICATIONS






320-325-330 Watt POLYCRYSTALLINE SOLAR MODULE

RE7P320VB5B • RE7P325VB5B • RE7P330VB5B

Salient Features

	<p>High module conversion efficiency Module efficiency up to 16.9% achieved through advanced cell technology and manufacturing capabilities</p> <p>Positive tolerance Positive tolerance of up to 5W delivers higher output reliability</p> <p>High PID resistant Advanced cell technology and qualified materials lead to high resistance to PID</p> <p>Anchor current sorting process System output maximized by reducing mismatch losses up to 2% with modules sorted & packaged by amperage</p> <p>Extended wind and snow load tests Module certified to withstand extreme wind (3800 Pascal) and snow loads (5400 Pascal) *</p>	<p>Withstanding harsh Environment Reliable quality leads to a better sustainability even in harsh environment like desert, farm and coastline</p> <p>Salt mist resistant Salt mist corrosion resistant. Suitable for seaside environment.</p> <p>Ammonia resistant Ammonia resistant. Suitable for farm environment.</p> <p>Excellent weak light performance Excellent performance under low light conditions</p>
---	---	---

IEC DIN EN 61215 (VDE 0126 - 31)
DIN EN 61730 - 1 (VDE 0126 Teil)
DIN EN 61730 - 2 (VDE 0126 30-1 - 30-2)

Certifications and standards:
IEC 61215, IEC 61730
IEC 62804 | IEC 62716 | IEC 61701



Trust Anchor to Deliver Reliable Performance Over Time

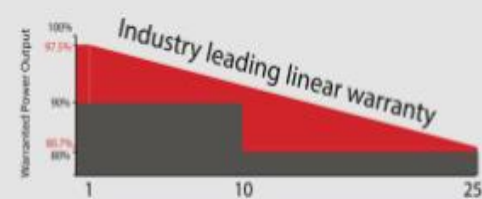
- World-class manufacturer of crystalline silicon photovoltaic modules
- Unrivaled manufacturing capacity and world-class technology
- Rigorous quality control meeting the highest international standards: ISO 9001: 2008, ISO 14001: 2004 and ISO17025: 2005
- Regular independently checked production process from international accredited institute/company
- Tested for harsh environments (salt mist, ammonia corrosion and sand blowing testing: IEC 61701, IEC 62716, DIN EN 60068-2-68)***
- Long-term reliability tests
- 2 x 100% EL inspection ensuring defect-free modules

Special 5 busbar design

The unique cell design leads reduction in electrodes resistance, shading area and raise in conversion efficiency. Residual stress distribution can be more even, reducing the micro-cracks risks.



Industry-leading Warranty based on nominal power



- 97.5% in the first year, thereafter, for years two (2) through twenty-five (25), 0.7% maximum decrease from MODULE's nominal power output per year, ending with the 80.7% in the 25th year after the defined WARRANTY STARTING DATE.****
- 12-year product warranty
- 25-year linear performance Warranty

IP67 Rated Junction Box

The Anchor IP67 rated junction box ensures an outstanding waterproof level, supports installations in all orientations and reduces stress on the cables. High reliable performance, low resistance connectors ensure maximum output for the highest energy production



430-445watt

144-CELL HALF CUT MONO CRYSTALLINE SOLAR MODULE

• AE14XXXVHC9B

Special Cell Design

The unique cell design leads to reduced electrodes resistance and smaller current, thus enables higher fill factor. Meanwhile, it can reduce losses of mismatch and cell wear, and increase total reflection.

9 BB

IP68 Rated Junction Box

IP68 rated junction box ensures an outstanding waterproof level, supports installations in all orientations and reduces stress on the cables. High reliable performance, low resistance connectors ensure maximum output for the highest energy production.

High power output
Compared to 158.75mm module, the power output can increase 25W-30W

High PID resistant
Advanced cell technology and qualified materials lead to high resistance to PID

Excellent weak light performance
More power output in weak light condition, such as haze, cloudy, and morning

Lower operating temperature
Lower operating temperature and temperature coefficient increases the power output

Extended load tests
Module certified to withstand front side maximum static test load (5400 Pascal) and rear side maximum static test loads (3800 Pascal) *

Withstanding Harsh Environment
Reliable quality leads to a better sustainability even in harsh environment like desert, farm and coastline

Trust Anchor to Deliver Reliable Performance Over Time

- World-class manufacturer of crystalline silicon photovoltaic modules
- Unrivaled manufacturing capacity and world-class technology
- Rigorous quality control meeting the highest international standards: ISO9001, ISO 14001 and ISO17025
- Regular independently checked production process from international accredited institute/company
- Tested for harsh environments (salt mist, ammonia corrosion and sand blowing testing: IEC 61701, IEC 62716)***
- Long-term reliability tests
- 2 x 100% EL inspection ensuring defect-free modules

Industry-leading Warranty based on nominal power

- 98% in the first year, thereafter, for years two (2) through twenty-five (25), 0.55% maximum decrease from MODULE's nominal power output per year, ending with the 84.8% in the 25th year after the defined WARRANTY STARTING DATE.****
- 12-year product warranty
- 25-year linear performance warranty



IEC DIN EN 61215 (VDE 0126 - 31)
DIN EN 61730 - 1 (VDE 0126 Teil)
DIN EN 61730 - 2 (VDE 0126 30-1 - 30-2)

Certifications and standards:
IEC 61215, IEC 61730
IEC 62716 | IEC 61701



* Please refer to Anchor Standard Module Installation Manual for details. **WEEE only for EU market.

*** Please refer to Anchor Product Near-coast Installation Manual for details. **** Please refer to PL-SIND Product Warranty for details.



High Performance PV Modules that speaks for itself

Central India's Most Trusted Premium Solar Energy Brand, with reliable after sale service.



HIGH Efficiency



HIGH Power Output



EXCELLENT Performance in low light



LOWER Temperature co-efficient



25 YEAR Output power warranty

Enphase IQ Micro – Smarter, Lighter and Faster

Delta RPI-Commercial Series

RPI - M12 / M15A / M20A / M30

Delta RPI - Commercial series comes in RPI12, RPI M15A, RPI M20A and RPI M30 models of transformerless PV inverters. With Delta's cutting-edge technology the commercial series are with efficiencies as high as 98.2%. These inverters are compact in size with durable quality to ensure smooth PV system operation.



- **Rapid shutdown certified** (NEC 2014 and NEC 2017)
- **97% CEC efficiency**
- **Plug and play 2-wire cabling system**
- **Polymer enclosure**
 - Double insulated, non-corrosive

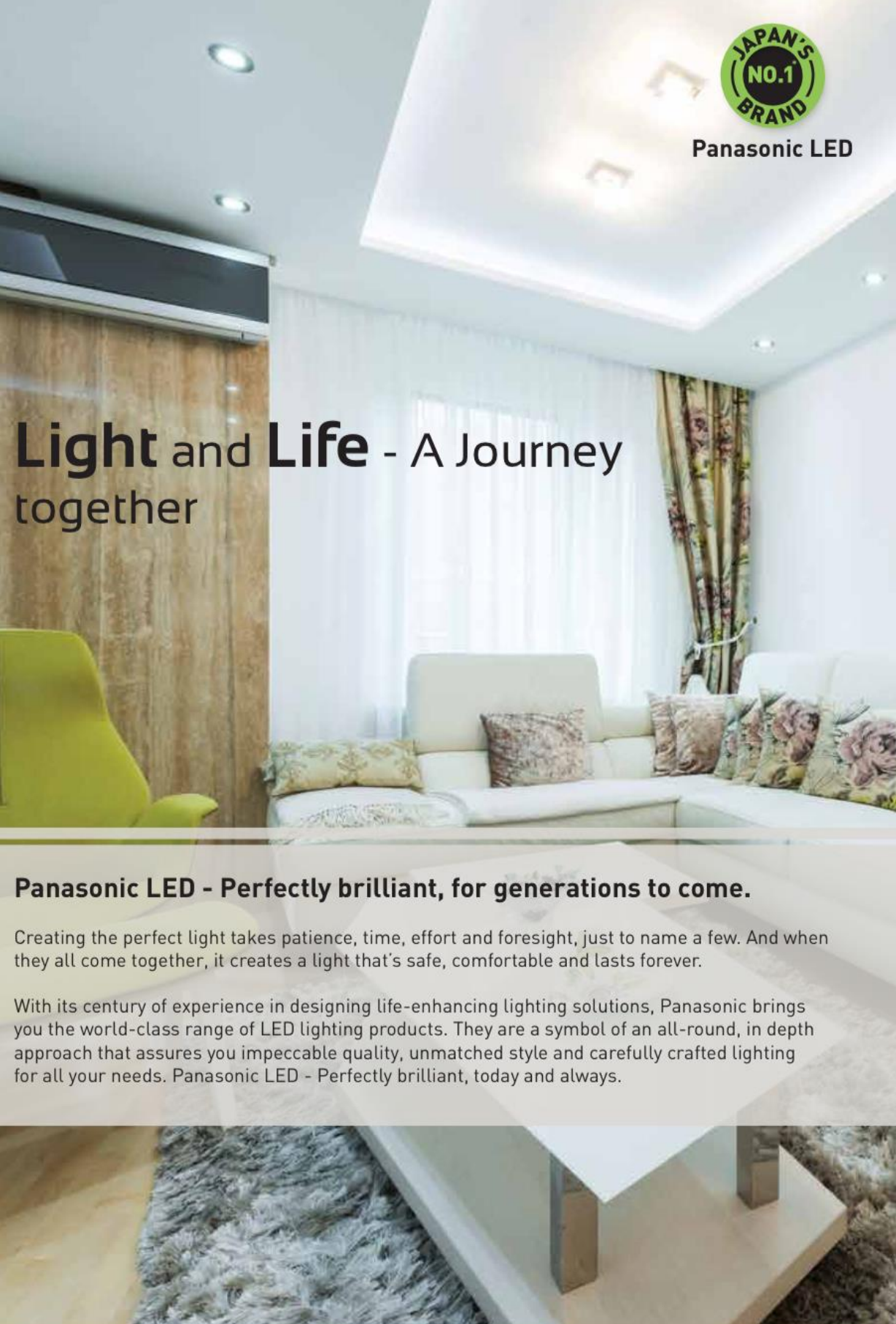




Fontana Maple Antique Brass 1270
MRP-7600

USHA FANS -DEALERS AND INSTALLERS

- PREMIUM FANS, REGULAR FANS ,CEILING FANS, PEDASTAL FANS, TABLE FANS, WALL MOUNTED FANS , HAND HELD FANS



Light and Life - A Journey together

Panasonic LED - Perfectly brilliant, for generations to come.

Creating the perfect light takes patience, time, effort and foresight, just to name a few. And when they all come together, it creates a light that's safe, comfortable and lasts forever.

With its century of experience in designing life-enhancing lighting solutions, Panasonic brings you the world-class range of LED lighting products. They are a symbol of an all-round, in depth approach that assures you impeccable quality, unmatched style and carefully crafted lighting for all your needs. Panasonic LED - Perfectly brilliant, today and always.

Panasonic LEDs

- Safety for generations**
 - Surge protection
 - Wide voltage range
 - Fire resistance
- Comfort for generations**
 - Low glare
 - Uniform lighting
- Long life for generations**
 - Consistent light output
 - Better heat dissipation

DEALERS -
1) PANASONIC COMMERCIAL AND PROFESSIONAL LIGHTING
2) TISVA - DECORATIVE AND DOMESTIC LIGHTING

TISVA®
FEEL THE WARMTH. SEE THE LIGHT.



DESIGNER LIGHTING

AN INITIATIVE OF _____
USHA INTERNATIONAL LTD

Solar products – IP RATED, CERTIFIED, ENERGY SAVERS





DESIGN AND EPC OF LED LIGHTING PROJECTS -

1)
PANASONIC COMMERCIAL AND PROFESSIONAL LIGHTING-
SUNNY BROOKS APARTMENTS ASSOCIATION-25 W
STREET LIGHTS-200 NOS. ,ADLER INDUSTRY, VRL,
SHANTISAGAR, SILENT SHORES SPA AND RESORT

2)TISVA DECORATIVE AND DOMESTIC LIGHTING -
CHANDLIER-TISVA-JANGAMA KALYANA MANTAPA,
BRIGADE APARTMENTS, SAMARTHANAM TRUST,



BELAKU ENGINEERS & CONSULTANTS SOLAR LAISONING EXPERTS



CONNECT TO US FOR
SOLAR SITE INSPECTION,
PPA, METER CALIBRATION,
BESCOM APPROVALS
, DRAWING AND SAFETY
APPROVALS - CEIG
, COMMISSIONING - MRT
CALIBRATIONS AND
TESTING , ETC
WE ARE - CLASS 1 LEC AND
CONSULTANTS WITH
EXPERIENCE OF
COMMISSIONING 2.5MW OF
SRTPV AND CONSULTANTS
WITH 30 YEARS
EXPERIENCE FORMERLY IN
BESCOM



- Class one Government Approved Electrical Contractors
- Consultants
- Energy Auditors
- Energy

No.345/21, 38th Cross, 28th Main, 9th Block,
Jayanagar, Bangalore - 560069
E-mail : belaku.engineers@gmail.com
Facebook Page :

Renewable energy for your home

The Ultimate **WORK FROM HOME** Power Solution!

India's FIRST Home UPS
with BUILT-IN SEALED
MAINTAINANCE FREE
BATTERY.



**ONE OF IT'S KIND
UNIQUE UPS WITH
INBUILT
BATTERY, LEAST
MANTAINANCE
, NO LEAKAGE
WHICH CAN
SUPPORT BACK UP
FOR
TV, LIGHTS, FANS
COMPUTERS AND
ROUTERS
AUTHORIZED
CHANNEL
PARTNERS -
MINCHU**



ಮಿಂಚು
Minchu
Solutions for Electrical Safety

OUR SERVICE PROJECTS-FAULT /TROUBLE SHOOT WORKS, FAULT CORRECTION ,SAFETY WORKS, SWITCH

Our Projects ,MCB REPLACEMENT,UPS WIRING , EARTHING EPC



CUSTOMERS



RK GROUP
The joy of good health™

SILENT SHORES
RESORT & SPA

1410
The Residences
Judicial Layout
Opposite Jaidur Flying Club

HITIN



RenSol
Ecotech
renewable energy solutions



N.E.T
PUBLIC SCHOOL

DECATHLON





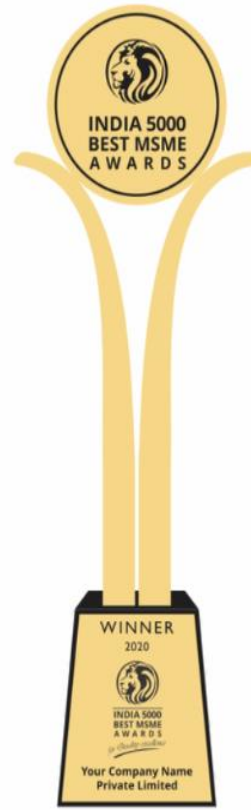
ESTEEMD -Projects

1) Chemical earthing -L&T,RMZ, PRESTIGE,BRIGADE, DECATHLON,RAGAVAS LABS ,DRDO,BHEL

2) Lightning Arrestors-NET public school, Sourdika sangha -100kw SRTPV, VIZIPA optima constructions

3) Safety Helmet Mounted Tester ,Pen Type tester,shock proof gloves, gum boots,safety belts, telescopic discharge rod,Rechargable Led Torch - KPTCL,BESCOM ,CHESCOM ,L&T, OKAS CONSTRUCTIONS, POWER CONTROLS ,ADLER ENSERV,TATA POWER , PEB

CERTIFICATE OF NOMINATION



Presented to

Minchu Pvt Ltd

For successfully being part of Nomination Phase of

**INDIA 5000 BEST MSME
AWARD**



**INDIA 5000
BEST MSME
AWARDS**
for Quality excellence



www.india5000.com



Certificate

This is to certify that
Mr. Pranav CM
Registered ID No. 20200401301

has successfully completed NSCI E-learning course on
Electrical Safety

Conducted from 06/01/2021 to 28/06/2021

Securing "A" Grade

Course Coordinator

Director General

ACHIEVEMENTS- CERTIFICATIONS



Certificate of Completion

This certificate is awarded to

Pranav cm

For successfully completing the International Association of Certified Home Inspectors' online course and examination on the topic of

Saving Home Energy for Real Estate Professionals Course

Final Exam Score: 81 (out of 100)



Issued by the International Association
of Certified Home Inspectors
1750 30th Street
Boulder, CO 80301

Issued On: 4/28/2020
Exam Code: EDU-0001-3806-64
Credit Hours: 3 Hours

- VOTED AS ONE AMONGST TOP 5000 INNOVATIVE START UPS IN A POLL CONDUCTED BY CNBC SND TQV
- WAS ONE OF THE 7 START UPS IN ELECTRICAL SAFETY SECTOR TO HAVE PARTICIPATED IN WORLD SAFETY WEEK EXHIBITION OF ABB IN 2016 .
- CPRI CERTIFIED PRODUCTS
- THE HIGHEST SELLER OF STREET LIGHTS OF A PARTICULAR BRAND FOR ANY GATED COMMUNITY -300 NOS. FOR SUNNY BROOKS GATED COMMUNITY .
- ONE OF THE LARGEST SUPPLIER OF SAFETY PRODUCTS TO ESCOMS ACROSS SOUTH INDIA
- WAS ACCREDITED FOR DESIGNED AND SUPPLIED SHOCKPRO EARTHING ELECTRODES FOR RAGAVAS DIAGNOSTIC LABS- 80 NOS . TO ACHIEVE A RESISTANCE OF BELOW 0.5 OHMS .
- Esteemed certified member of National safety council.
- Internachi,USA, Certified energy saving expert

ASKS

- MEP CONSULTANTS
- FACILITY MANAGEMENT FIRMS
- BUILDERS
- CONSTRUCTION COMPANIES
- ELECTRICAL CONTRACTORS
- CIVIL CONTRACTORS
- SOLAR EPC COMPANIES
- LIFTS AND ELEVATORS EPC FIRMS
- UPS-DG FIRMS
- TRANSFORMER COMPANIES
- ARCHITECTS

Gives-CONNECTS

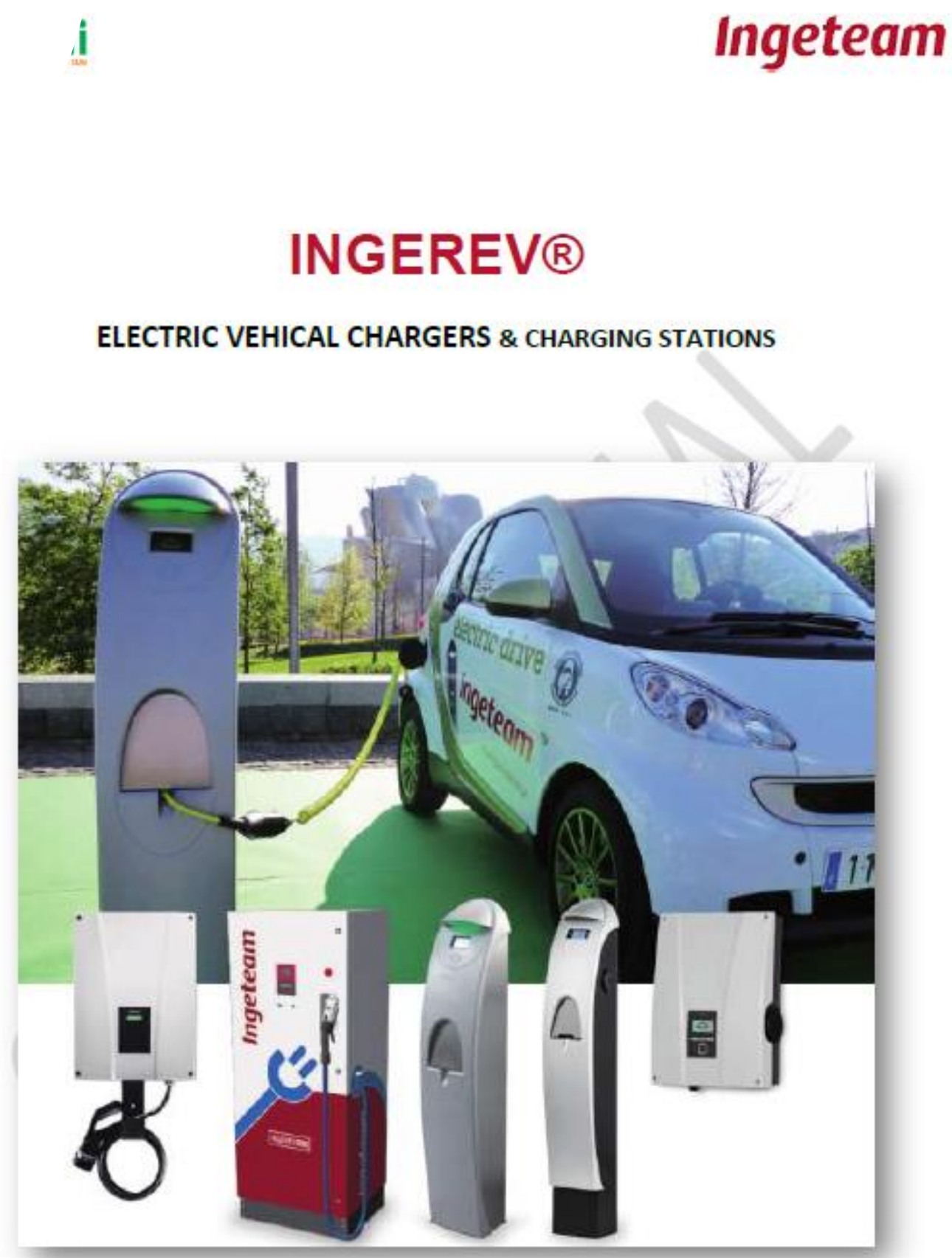
- NET PUBLIC SCHOOL
- RENXSOL ECOTECH
- VIZIPA CONSTRUCTION
- ADLER ENSERVE
- KPTCL
- BESCOM
- BEML
- DRDO
- CHESCOM
- DECATHLON
- SUNNY BROOKS-VILLAS ASSOCIATION
- RMZ
- BHEL
- SOLAR COMPANIES
- PANASONIC
- TISVA –USHA

FUTURE GOAL

- 1) STRIVE FOR MORE AWARENESS ABOUT ELECTRICIAN /LINEMAN OCCUPATIONAL SAFETY HAZARD AND LIFE SAFETY DURING WORKING CONDITIONS.
- 2) STRIVE FOR CONSERVATION OF ENERGY AND USE OF OPTIMUM ENERGY BY UTILIZING SOLAR ENERGY AND LED LIGHTING AND TO BE A PRIME EPC PIONEER IN SOLAR PROJECTS AND LIGHTING PROJECTS
- 3) STRIVE FOR ELECTRICAL SAFETY FOR DG,LIFT , TRANSFORMERS ,SOLAR PANELS,INVERTERS ,UPS AND HENCE AVOID SHORT CIRCUIT ,OVER LOAD FAULTS,EARTHING FAULTS
- 4) BEING SAFE IS BEING HAPPY AND BEING ABLE TO CONTRIBUTE TOWARDS BETTER NATION BUILDING ,SO WORK SAFE AND WORK EFFICIENTLY .
- 5) TO CREATE AND INVENT NEW AGE R&D PRODUCTS UNDER OCCUPATIONAL SAFETY

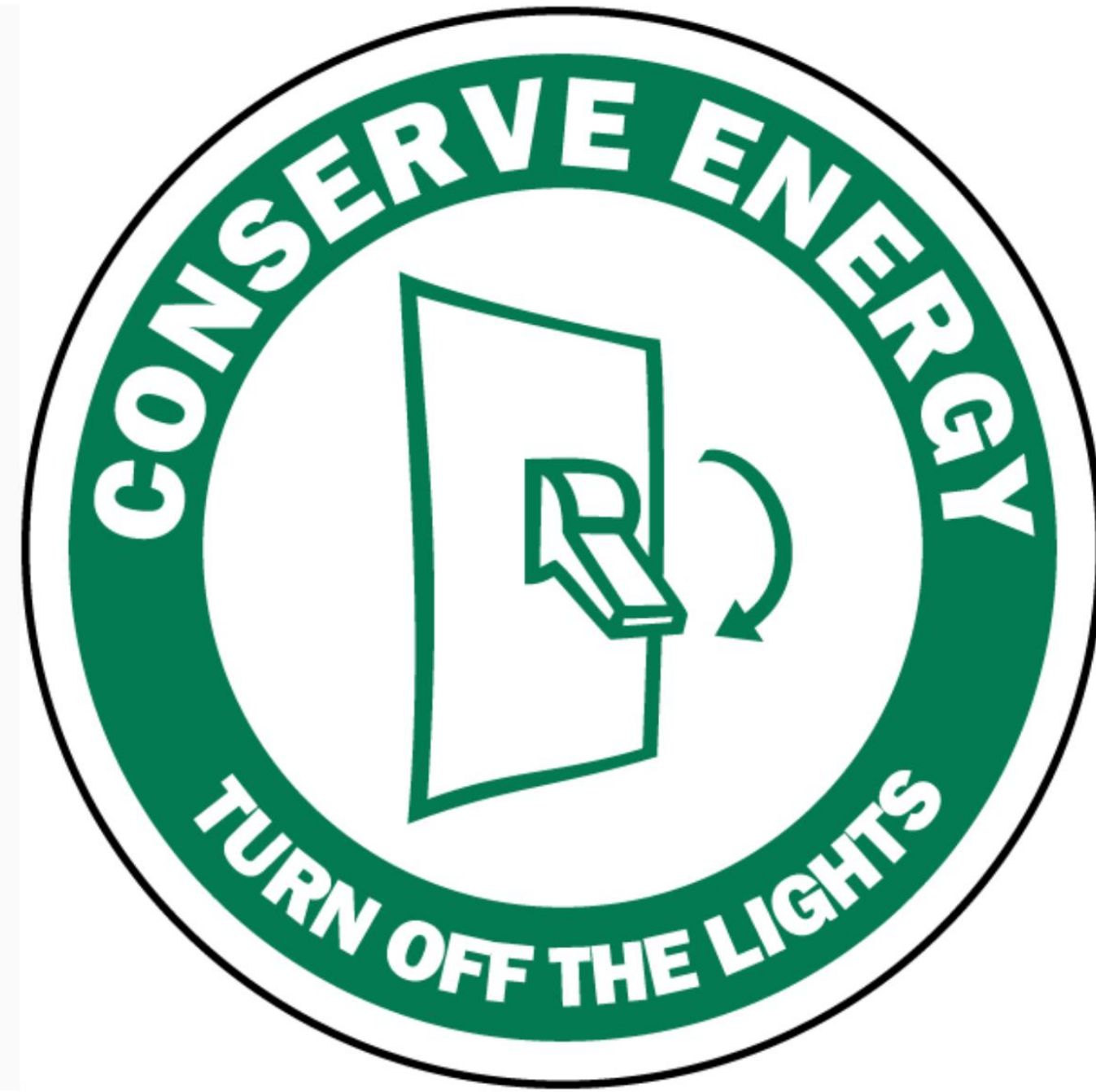
The future.....

INGETEAM -EV CHARGING STATION



BOSCH PHANTOM – ELECTRICAL BMS





Do not waste electricity ,use electricity responsibly electrical safety products avoid electric shocks -stay safe & Thank you for your precious time